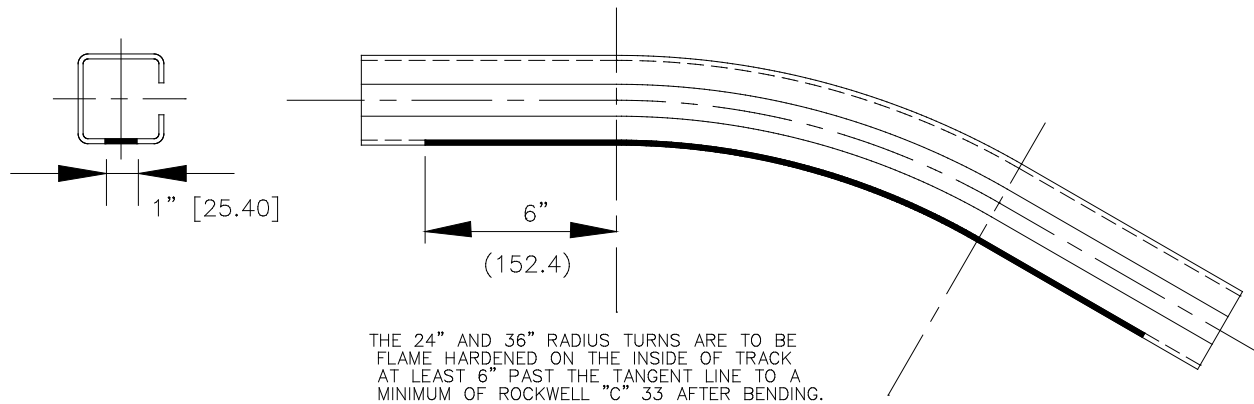


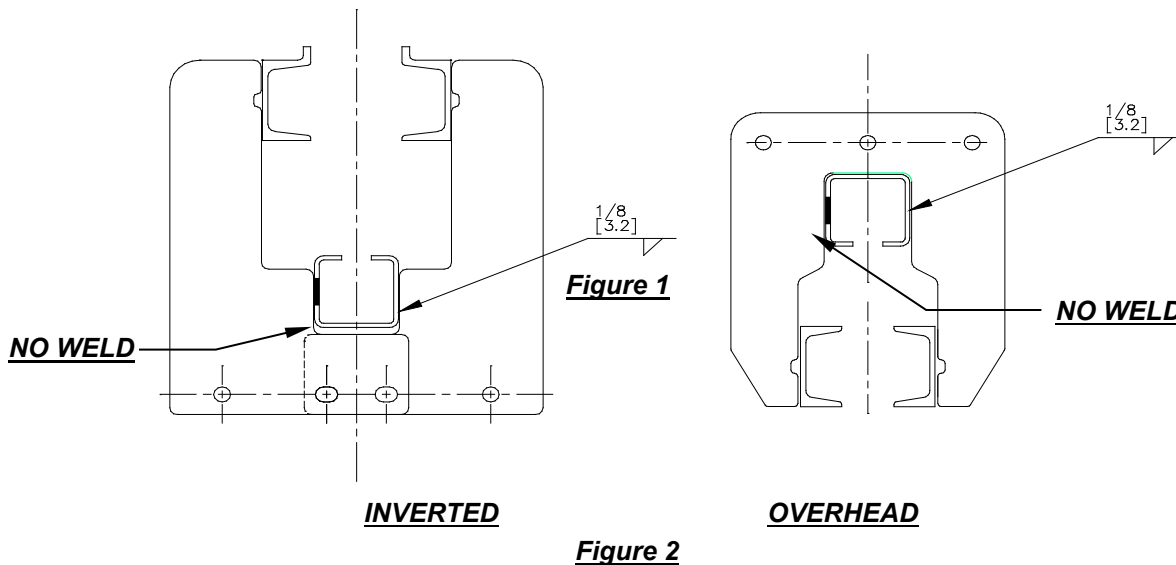
## PRODUCT SALES BULLETIN

**SUBJECT:** Unibilt® Enclosed Track Overhead and Inverted Horizontal Turns: Heat Treating and Assemblies.

To improve the wear resistance of Unibilt's enclosed track turns, all 24" and 36" radius enclosed track turns are heat-treated. The heat-treated area is 1" wide and runs the length of the inside radius plus 6" past the tangent lines on both sides as seen in Figure 1 below.



In addition, to ensure that the heat-treated area is not annealed, the track and yoke should not be welded in the heat-treated area as shown in Figure 2 below.



**BULLETIN NO.:** 700-004  
**REVISION :** 02  
**DATE:** 08-25-2022

©2022 Daifuku America Corporation: This document, including the design and information disclosed, is the property of and for the exclusive use of the Daifuku and is submitted with the understanding that it is not to be reproduced, nor copied in whole or in part, nor loaned or otherwise communicated to any third party, nor used in any manner detrimental to the Daifuku without its express written consent.

**DAIFUKU**  
 DAIFUKU AMERICA CORPORATION