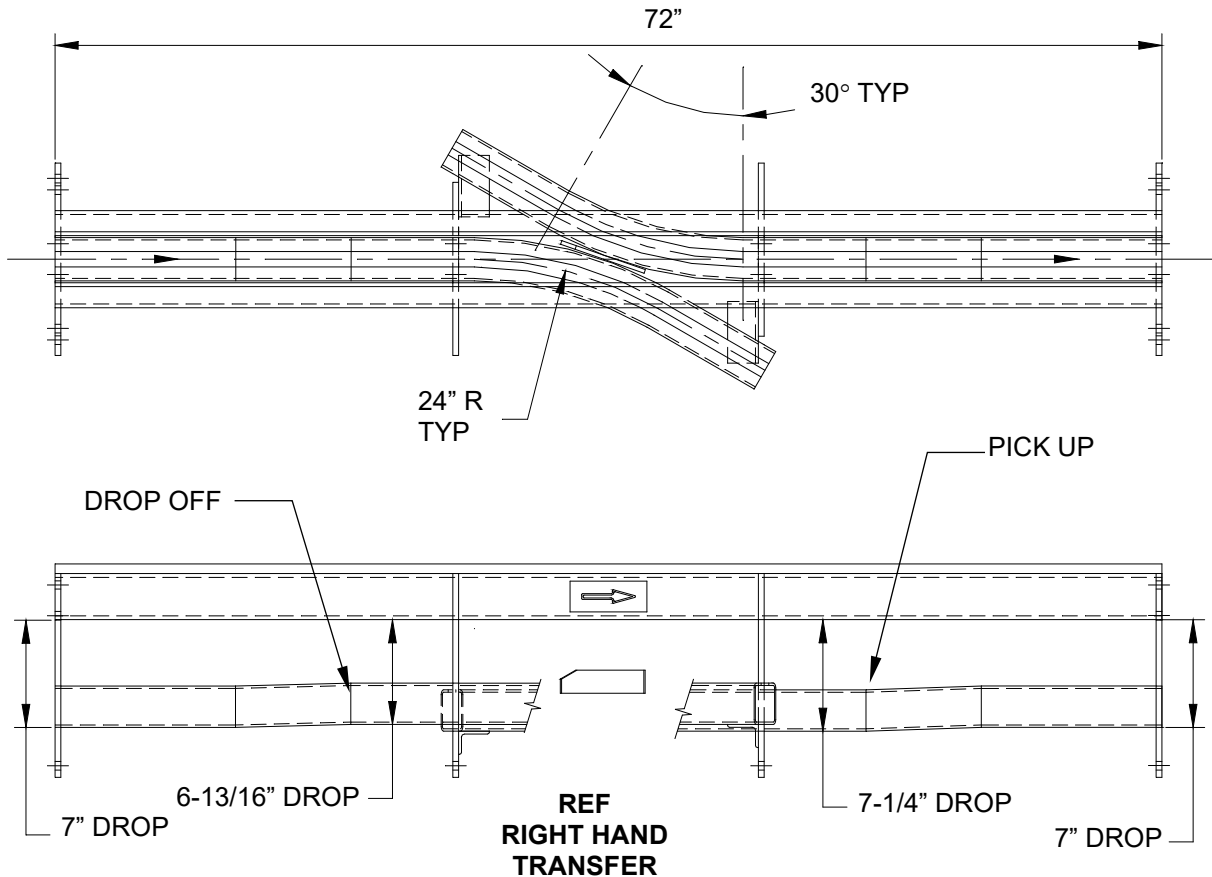


PRODUCT SALES BULLETIN

SUBJECT: New Standard Uni/3" Inverted Chain to Chain Transfers

The UNIBILT standard right-hand and left-hand Uni/3" Inverted Chain to Chain Transfers (part 21616 and part 21617, respectively) are set up with a drop off chain drop of 6 13/16" and a pick up chain track drop of 7 1/4". The 24" R x 30° horizontal turns are incorporated within the transfer section. Variations are not required for differences in chain speed.



BULLETIN NO.: 500-001
REVISION : 02
DATE: 08-25-2022

©2022 Daifuku America Corporation: This document, including the design and information disclosed, is the property of and for the exclusive use of the Daifuku and is submitted with the understanding that it is not to be reproduced, nor copied in whole or in part, nor loaned or otherwise communicated to any third party, nor used in any manner detrimental to the Daifuku without its express written consent.

DAIFUKU
 DAIFUKU AMERICA CORPORATION