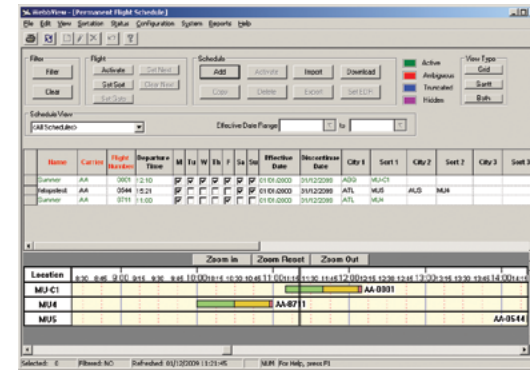


Flight Schedules & Flight Schedule Management

WebbView® Flight Manager software provides the supervisory user with the tools to prepare and store schedules for future use. Future schedules, including those for weekends and holidays, are stored in a Permanent Flight Schedule folder where operators can enter flight-to-make-up assignment information.

When a schedule is to be implemented in the system, the operator moves it to the Current Schedules location. Each day, at system re-set, an activation process takes place where the Current Schedule becomes the Active Flight Schedule, which establishes the parameters for sorting baggage throughout the day, including any updates from the Flight Schedule Interface.



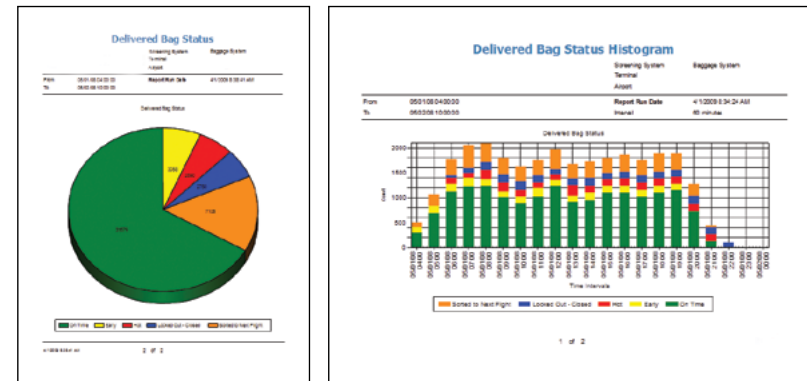
WebbView®

Integrated Baggage Handling Control System

Graphical Reports

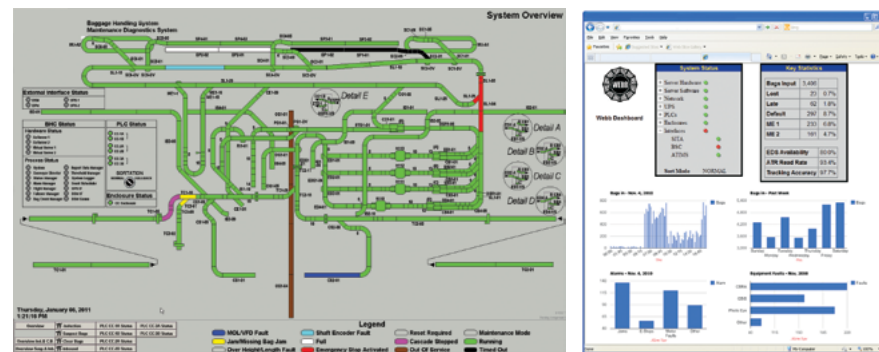
WebbView provides dozens of comprehensive reports about your baggage handling system, including:

- Day End
- Delivered to Carrier
- Delivered Bag Status
- Bag Time in System
- Throughput Trendline
- Flight Summary
- Bag History
- Delivered Bag Status Histogram



Operator Interface

WebbView's operator interface has a familiar look and feel, which makes it easy-to-use and easy-to-learn.



DAIFUKU WEBB

JERVIS B. WEBB COMPANY

34375 W. Twelve Mile Road • Farmington Hills, MI 48331
248-553-1220 phone • 248-553-1228 fax • info@daifukuwebb.com • www.daifukuwebb.com

NOTICE: The information, data and specifications in this brochure are subject to change without notice and should not be used for construction purposes. Jervis B. Webb Company does not represent or warrant that selection of components or accessories set forth in this brochure will necessarily result in proper installation, operation and/or maintenance of such equipment or system, and Webb disclaims responsibility for any and all damages and injuries resulting from selection, design, installation, operation or maintenance performed by non-Webb personnel. WebbView® is a registered trademark of the Jervis B. Webb Company.

©2011 Jervis B. Webb Company Bulletin # 7501 051311

DAIFUKU WEBB

JERVIS B. WEBB COMPANY

Webb View.

Webb View® is the most advanced and comprehensive baggage handling control system (BHCS) in the industry. The newly updated control system is the result of decades of baggage handling experience and a major research and development investment by Daifuku and Jervis B. Webb Company to create a state-of-the-art solution on the familiar Microsoft® Windows® platform. WebbView ensures high baggage throughput and baggage tracking accuracy by integrating four key elements of a control system: supervisory control, equipment control, manual encode and user interface.

<h3>Supervisory Control</h3> <ul style="list-style-type: none"> • Bag Tag Translation • Sortation Logic Control • Flight Schedule Management • Report Functions • BSM & Flight Information Interfaces 	<h3>Equipment Control</h3> <ul style="list-style-type: none"> • Motor Control Sequencing • Bag Tracking and Sorting • Manual Encode Interface • Bag Tag Scanner Interface • Performance Data Collection
<h3>Manual Encode</h3> <ul style="list-style-type: none"> • Local Fault Annunciation • WebbView Touch Screen Terminal • Advanced Functionality • Stand Alone Sortation • Flight Information 	<h3>User Interface</h3> <ul style="list-style-type: none"> • Supervisory User Interface • Status Display • Alarm Conditioning and Reporting

Convenient Mobile App

Jervis B. Webb Company has revolutionized the baggage handling industry with its WebbView® Mobile App that can be accessed anytime, anywhere. WebbView is one of the first applications allowing airport personnel to check baggage status, troubleshoot baggage back-ups and review the overall status of the baggage handling system from their mobile phones.

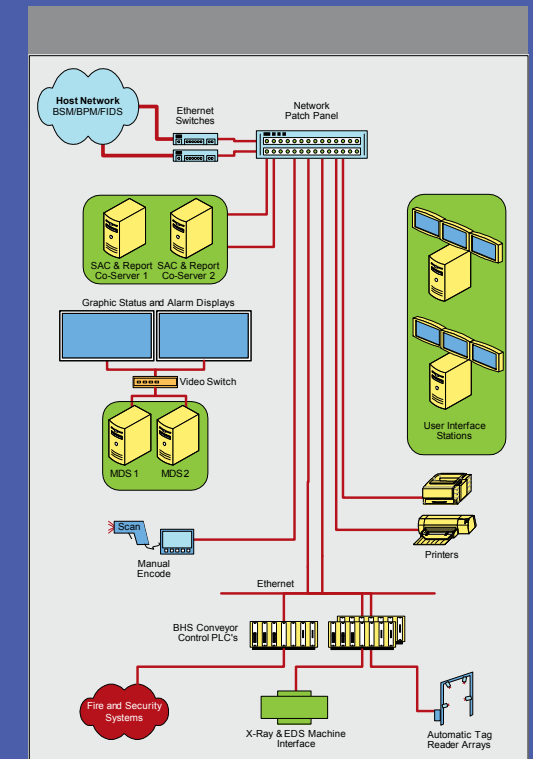


Redundancy in Processing & Network Components

The WebbView® control system architecture features redundancy in processing and networking components to avoid single points of failure. It is scalable, which allows it to satisfy the requirements of small to very large baggage handling systems. Key to the higher level of the architecture is a virtual, hot back-up server configuration comprised of standard, off-the-shelf Server PC hardware.

Host Network Interfaces

The airline/airport host network sends Baggage Source Message (BSM) information to the control system to route the bags through the system. The purpose of this interface is to exchange Baggage Source Message (BSM) and Baggage Processed Message (BPM). The BSM contains information used by the sortation system to sort baggage. The BPM informs the sender of BSM about the status of baggage within the sortation system. The Flight Schedule Interface (FSI) also interacts with the WebbView® control system. The purpose of this interface is the exchange of flight information between the control system and the airline host network.

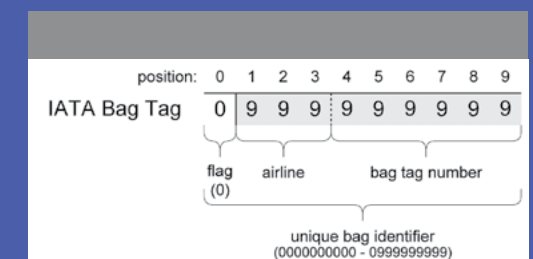


WebbView's control system architecture features the ultimate in redundancy

Baggage Sortation

Several different tag formats are supported for the identification and sortation of baggage, including:

- **IATA License Plate Tags** - The IATA license plate tag is the tag most typically used within the BHCS.
- **IATA Fallback Tags** - This tag is the IATA standard baggage tag used in a fallback sortation situation.
- **4-digit Tags** - reflecting the outbound flight number
- **2-digit Tags** - indicating pier destination within the baggage sortation system



The standard IATA 10-digit bag tag is the most commonly used. The Baggage Sort Message provides information that is used by WebbView® to route baggage.